

---

## **SkillCheck Scores Database**

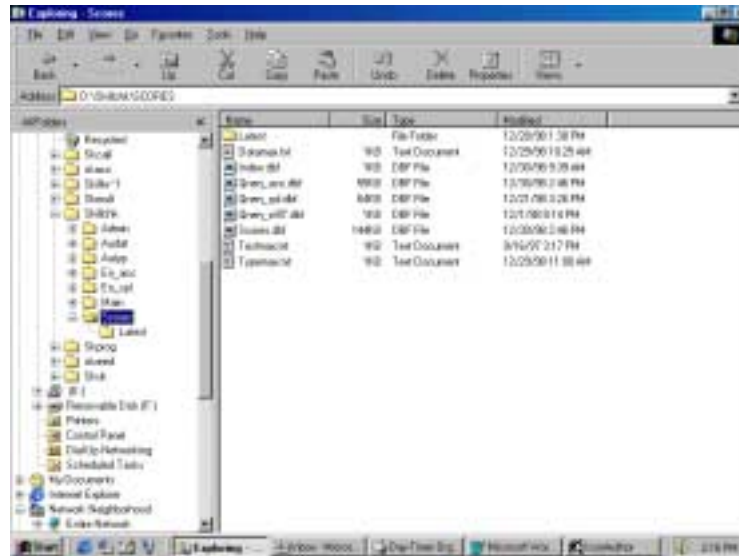
---

All scores for tests taken with the SkillCheck Professional testing system are stored in a database. Normally, test administrators retrieve information from the database using the SkillCheck Database Viewer that allows for the creation of reports based on stored test scores.

Some customers may need to directly access the SkillCheck scores database file in order to allow computerized search and retrieval systems to directly import test scores or link SkillCheck with a third-party training program. This document explains how the SkillCheck scores database is formatted and structured, giving developers who may be interested in integrating SkillCheck with other products the information they need to understand how the SkillCheck Professional system stores data.

The scores database is password-protected. To obtain the password, please contact SkillCheck Technical Support at (800) 347-0395.

## SkillCheck Scores Database



The database that contains scores for SkillCheck tests is stored in the **PROGRAM FILES\SKILLCHECK\SCORES** subdirectory.

The SkillCheck database is in the Access 97 format and is named **SKSCORES.MDB**.

There are two significant data tables in this database:

- The **SCORES** table contains information on each test taken with the SkillCheck Professional system. For example, if a candidate takes a single Word 97 test, information on that test (the candidate's first name, last name, ID number, as well as overall test scores, topic and level scores) is stored in a single record in the **SCORES** table.

If a single candidate takes three different SkillCheck tests, three records will appear in **SCORES**, one for each test. Each record will contain complete information about the candidate and test scores (the candidate's first name, last name, ID number, as well as overall test scores, topic and level scores). Candidate information is not stored separately from test scores.

- The **QNALL** table, which contains information on each question answered in a SkillCheck Software Skills or Professional Skills test.

As examinees answer questions in a SkillCheck Software Skills or Professional Skills test, the **QNALL** table is populated. Once the candidate has answered all questions in the test, information in the **QNALL** table is used to generate the percentage scores which are then copied into the **SCORES** table.

Scores for typing and audio typing, data entry and audio data entry, ten key, and multiple-choice tests created with the SkillCheck TestMaker product are written directly into SCORES at the end of a test. No additional QNALL information exists for these types of tests.

## SKSCORES.MDB Specification

Normally, the information in the SCORES table is used to transfer test scores into a third-party search and retrieval system. The SCORES table stores overall test scores, as well as topic and level scores for each test. For typing and data entry tests, SCORES stores statistical information on typing and data entry speed.

The QNALL table stores detailed information on each question answered correctly and incorrectly. This detailed information is normally not needed after a test is completed. However, data in the QNALL table may be useful for those integrating SkillCheck into some third-party training program.

The format of the SKSCORES.MDB Access 97 file is as follows:

### SCORES TABLE

FIELD NAME	FIELD TYPE	WIDTH (in characters)	DESCRIPTION
INDEX_NUM	AutoNumber		A unique index number assigned to each record in the database. ( <b>Note:</b> These indexes are used to match up a record in SCORES with detailed information stored in the appropriate QN table.)
FIRST	Text	40	Examinee's first name (specified during test registration)
FIRST_QUERY	Text	40	ODBC-compliant queryable first name string
LAST	Text	40	Examinee's last name (specified during test registration)
LAST_QUERY	Text	40	ODBC-compliant queryable last name string
ID	Text	40	Examinee's ID number (specified during test registration)
DATFILE	Text	12	N/A (for programming usage only)
STSFILE	Text	12	N/A (for programming usage only)
TEST	Text	50	Name of test
TYPE	Number	Double	N/A (for programming usage only)
CURR_DATE	Text	15	Current date (in the format MM/DD/YY when SkillCheck is set US date format, DD/MM/YY when it is set for European date format)
DBDATE	Number	Long	Date in the format YYYYMMDD

		<b>Integer</b>	(Note: The entry in this date field does not change date format within SkillCheck from US to European or vice versa.)
<b>TIMESTRT</b>	<b>Text</b>	<b>9</b>	Time the test began (in the format HH:MM using the 24 hour clock)
<b>TIMEELAP</b>	<b>Text</b>	<b>9</b>	Total test time (in minutes)
<b>SCORETOT</b>	<b>Number</b>	<b>Double</b>	Percentage total test score
<b>SCOREBEG</b>	<b>Number</b>	<b>Double</b>	Percentage score on beginner test items
<b>SCOREINT</b>	<b>Number</b>	<b>Double</b>	Percentage score on intermediate test items
<b>SCOREADV</b>	<b>Number</b>	<b>Double</b>	Percentage score on advanced test items
<b>PROFNCY</b>	<b>Text</b>	<b>10</b>	Rating of the candidate's productivity based on if they answered a software question by using shortcut keys whenever given the opportunity to do so. This productivity measurement is either <b>High</b> , <b>Medium</b> or <b>Low</b> .
<b>NTOPICS</b>	<b>Number</b>	<b>Double</b>	Number of topics in the test
<b>TOPIC1 - TOPIC30</b>	<b>Text</b>	<b>255</b>	Name of a topic in the test. ( <b>Note:</b> A test can have up to 30 topics, although most will have fewer.)
<b>SCORE1 – SCORE 30</b>	<b>Number</b>	<b>Double</b>	Percentage score for the corresponding topic.
<b>PRIMARY</b>	<b>Number</b>	<b>Double</b>	N/A (for programming usage only)
<b>SECONDARY</b>	<b>Number</b>	<b>Double</b>	N/A (for programming usage only)
<b>TERTIARY</b>	<b>Number</b>	<b>Double</b>	N/A (for programming usage only)
<b>GROSS</b>	<b>Number</b>	<b>Double</b>	Gross typing or data entry speed (used for typing and data entry tests only). Typing tests store gross typing speed in words per minute. Data Entry tests store gross typing speed in keystrokes per hour.
<b>ERRORS</b>	<b>Number</b>	<b>Double</b>	Number of errors (typing and data entry tests only)
<b>ADJERRORS</b>	<b>Number</b>	<b>Double</b>	Adjusted errors (typing and data entry tests only). Typing tests store adjusted errors in words per minute. Data Entry tests store adjusted errors in keystrokes per hour.
<b>NET</b>	<b>Number</b>	<b>Double</b>	Net typing or data entry speed (typing and data entry tests only). Typing tests store net typing speed

			in words per minute. Data Entry tests store net typing speed in keystrokes per hour.
<b>GRADE</b>	<b>Text</b>	<b>25</b>	Grade assigned to an overall test score (user defined text)
<b>AGE</b>	<b>Number</b>	<b>Double</b>	Demographic information (currently not used)
<b>RACE</b>	<b>Number</b>	<b>Double</b>	Demographic information (currently not used)
<b>GENDER</b>	<b>Number</b>	<b>Double</b>	Demographic information (currently not used)
<b>ABORIGINAL</b>	<b>Number</b>	<b>Double</b>	Demographic information (currently not used)
<b>DISABLED</b>	<b>Number</b>	<b>Double</b>	Demographic information (currently not used)
<b>COUNTRY</b>	<b>Number</b>	<b>Double</b>	N/A (for programming usage only)
<b>MISC1</b>	<b>Text</b>	<b>25</b>	N/A (for programming usage only)
<b>MISC2</b>	<b>Text</b>	<b>25</b>	N/A (for programming usage only)
<b>MISC3</b>	<b>Text</b>	<b>25</b>	N/A (for programming usage only)
<b>MISC4</b>	<b>Text</b>	<b>25</b>	N/A (for programming usage only)
<b>MISC5</b>	<b>Text</b>	<b>25</b>	N/A (for programming usage only)

#### QNALL TABLE

<b>FIELD NAME</b>	<b>FIELD TYPE</b>	<b>WIDTH (in characters)</b>	<b>DESCRIPTION</b>
<b>INDEX_NUM</b>	<b>Number</b>	<b>Long Integer</b>	A unique index number assigned to each test taken by an examinee. Each question in the test is assigned the same index number in the QN tables. Candidate information corresponding to the index in the QN field appears in the INDEX_NUM field of the SCORES table.
<b>QNUM</b>	<b>Number</b>	<b>Long Integer</b>	Question number based on ordering of questions in the specific test
<b>QTIME</b>	<b>Number</b>	<b>Long Integer</b>	Time taken per question in seconds
<b>QNID</b>	<b>Text</b>	<b>5</b>	Question ID number (for programming purposes only)
<b>QUESTION</b>	<b>Text</b>	<b>40</b>	Question name (identifier/objective)
<b>FINAL</b>	<b>Text</b>	<b>25</b>	Whether the examinee answered the question <b>Correct</b> , <b>Incorrect</b> , or <b>Incomplete</b> (skipped).
<b>WRONG</b>	<b>Text</b>	<b>100</b>	Text describing what the candidate did wrong if they answered the

			question incorrectly.
<b>LEVEL1</b>	<b>Text</b>	<b>100</b>	Level assigned to the question
<b>TOPIC</b>	<b>Text</b>	<b>255</b>	Topic assigned to the question
<b>COMMENTS</b>	<b>Text</b>	<b>250</b>	Comment assigned to the question

## **Using SkillCheck Scores**

If you plan to export scores from the SkillCheck scores databases to another application, such as a search-and-retrieval system or training product, keep in mind that these databases are being written to and read from frequently whenever testing and report generation is taking place.

When SkillCheck is run on a network, different nodes access scores databases simultaneously using Microsoft ODBC. If you plan to integrate the network version of SkillCheck with another product, or if you need to access the SkillCheck scores databases while testing is taking place, please contact SkillCheck at 1-781-229-8388 for more information on accessing SkillCheck scores via ODBC.

Additionally, please be aware that the entire scores database is password protected. This protection is to ensure that access to the database and its sensitive material is restricted to authorized personnel. To obtain the password, please contact SkillCheck Technical Support at (800) 347-0395.